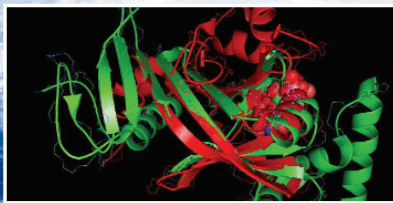


The RealD LP™

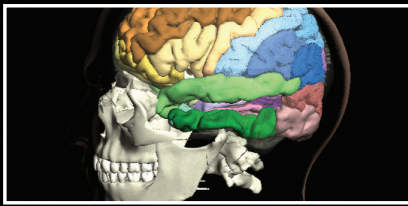
LINEAR POLARIZING Z SCREEN

THE WORLD'S FIRST MOBILE SINGLE-PROJECTOR PASSIVE 3D SOLUTION.



**EDUCATION, COMMERCIAL AND INDUSTRIAL 3D IS NOW EASIER,
AFFORDABLE AND MORE ENGAGING ON SCREENS UP TO 17 FEET.**

realD PRO



The RealD LP™

LINEAR POLARIZING Z SCREEN

MOBILE, AFFORDABLE, HIGH-QUALITY 3D PRESENTATIONS

3D content is more engaging, memorable and productive. The RealD LP™ creates stunning 3D images for small or medium size audiences anytime, anywhere on screens up to 17 feet wide. Permanently mounted or set up for individual presentations in minutes, the RealD LP™ is the first 3D product of its kind. The RealD LP™ is available only through RealD PRO.

STEREO3D™ APPLICATIONS

- Presentations at any location
- Virtual prototyping and architecture
- Attractions and virtual rides
- Exhibits in museums and education centers
- Scientific, military, industrial and educational information displays
- Video games

3D: MORE POWERFUL AND ENGAGING THAN 2D

- If you are already presenting in a traditional 2D format, enhance the performance with 3D
- Offer a more unique and intense experience
- Change your exhibit easily in less time, at lower cost with flexible content
- Increase attendance

UPGRADE YOUR EXISTING 3D SYSTEM

- Lower lamp and maintenance costs vs. dual projector systems
- Per-user cost a fraction of active eyewear systems
- Capable of any resolution output by the projector (resolution independent)
- Drive content from a single source – reduce synchronization issues
- Scalable for small or large groups

BENEFITS OF THE LP™ Z SCREEN VS. OTHER SYSTEMS

- Easy setup – mobile 3D presentations in minutes or fix in place for long-term use
- Hassle-free eyewear – comfortable, affordable, reusable passive glasses
- Flexible – switch between 2D and 3D content in seconds
- Single projector benefits – no dual-projector maintenance costs, headaches or eye strain
- Image quality – perfect light synchronization: Crisp images without static filters


TECHNICAL SPECIFICATIONS

- 120v power supply
- Screens up to 17 feet wide
- Double-flash 60hz or single-flash 120hz compatibility with 3D-capable projectors
- 150:1 contrast ratio
- Slave to projector
- Web configurable for setting customization



TECHNICAL SPECIFICATIONS

The RealD LP™ is an externally-mounted peripheral for a single 3D-enabled DLP® projector. 3D content is fed to the projector in full-resolution frame-sequential format and the LP™ allows the content to be seen in 3D by polarizing right- and left-eye images. Using a polarization-preserving front/rear projection screen, Stereo3D™ is observed with RealD custom reusable passive-polarized eyewear. Electronic controls are conveniently integrated inside the LP™.

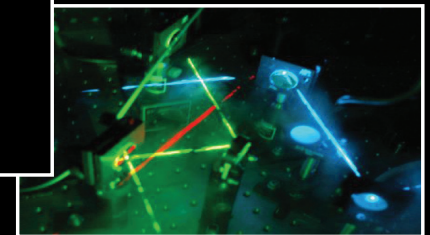
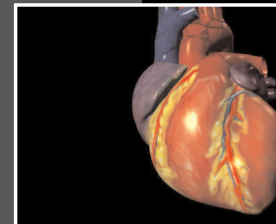
PROJECTOR	BRIGHTNESS WITH LP	MAX THROW DISTANCE	MAX RESOLUTION	CONTRAST RATIO WITH LP	MAX RECOMMENDED SCREEN SIZE
NEC NC800	4.5 fL	Lens dependent	2048 x 1080	8150:1 center	16.5 ft wide
Christie Mirage HD	4.5 fL	Lens dependent	1400 x 1050	150:1 center	13.9 ft wide
Lightspeed Design HD DepthQ	4.5 fL	Lens dependent	1280 x 720	150:1 center	8.9 ft wide
Power Supply	120V AC				
Projector Mount	Hardware provided for approved projectors & generic base mount optional for platform mounting				
Custom Parameter Settings	Web-supported via integrated Ethernet port				
Synchronization Indicator	Color Coded LED				
DriveParameter Range	Bias High Voltage Pulse Time		2600mV – 4321mV 9000mV – 26467mV 1uS – 3980uS		

Required Equipment for the RealD PRO LP

- 3D Enabled DLP® projector available from a variety of projector manufacturers
- Silver Screen from Harkness, MDI or Stewart
- Content on a server or PC with stereo-ready graphics card (such as Nvidia Quadro FX)

Installation

- RealD can coordinate content preparation and acquisition through our content partners
- RealD works with integrators who install the projector, screen, LP™ and sound system
- Installing the LP™ Z Screen takes just a few minutes after the screen and projector are installed



*DLP is a registered trademark of Texas Instruments Corporation

realD PRO